



Disclosure log

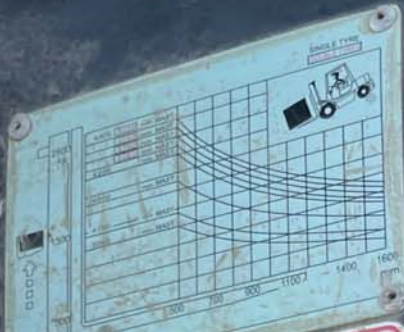


Disclosure log



Disclosure log





**FOR SUPERVISORS**

- YOU MUST FOLLOW THESE RULES TO AVOID SEVERE INJURY OR DEATH TO YOURSELF AND OTHERS.**
1. Operate truck only if trained and qualified.
  2. Examine the various control and alarm device before start, if found damaged or wrong, should be repaired and operations.
  3. Should not exceed the load carrying capacity, all goods inserted fork, fork placed on the uniform of goods, do not raise goods with single fork tip.
  4. Start, turn, travel, brake and stop smoothly, moving slowly when make turn on the most of smooth road.
  5. Keep the load as low as possible while traveling and tilt the mast backward.
  6. When operating on more than one tenth of the grade, have the rear end of your truck pointed down-hill. Do not make turns on a gradient.
  7. Do not load or unload the truck when it is running.
  8. Caution should be taken when moving pedestrians, obstacles and hole road, and pay attention to the gap between the top of forklifts.
  9. Do not let riders on forks, no passengers allowed on truck.
  10. Do not allow people stand or walk under forks.
  11. Do not operate the controls unless you are properly seated.
  12. Do not handle unstable or loose loads, use extreme caution when handling long or bulky loads.
  13. High mast forklift, which lifting height greater than 3 meters, should pay attention to the falling loads, when necessary, take protective measures.
  14. Do not lift or start with mast tilted forward, use minimum forward and reverse bit when stacking and unstacking loads.
  15. Drive carefully and slowly across the dock to and from edge.
  16. Drivers should leave the truck and tank end when refueling. Do not start engine when check battery or tank level.
  17. An unloaded forklift with attachment should be operated as a loaded one.
  18. When leaving the truck, turn the key to the position to shut off the engine, if park on a slope, apply the parking brake securely and block the wheels.









Disclosure log



Disclosure log



Disclosure log



Disclosure log



Disclosure log



Disclosure log

