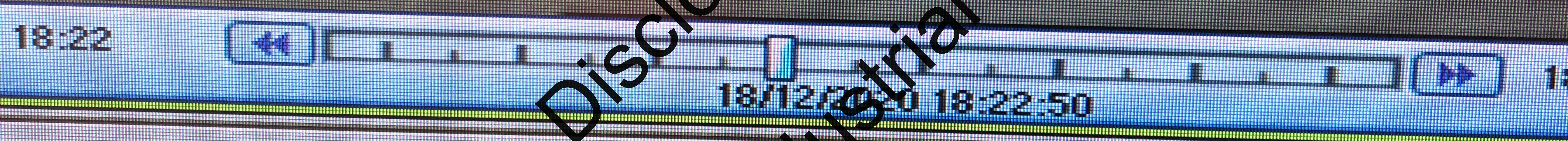


Office of Industrial Relations
Disclosure Log



NEC

RAYMOND

MODEL

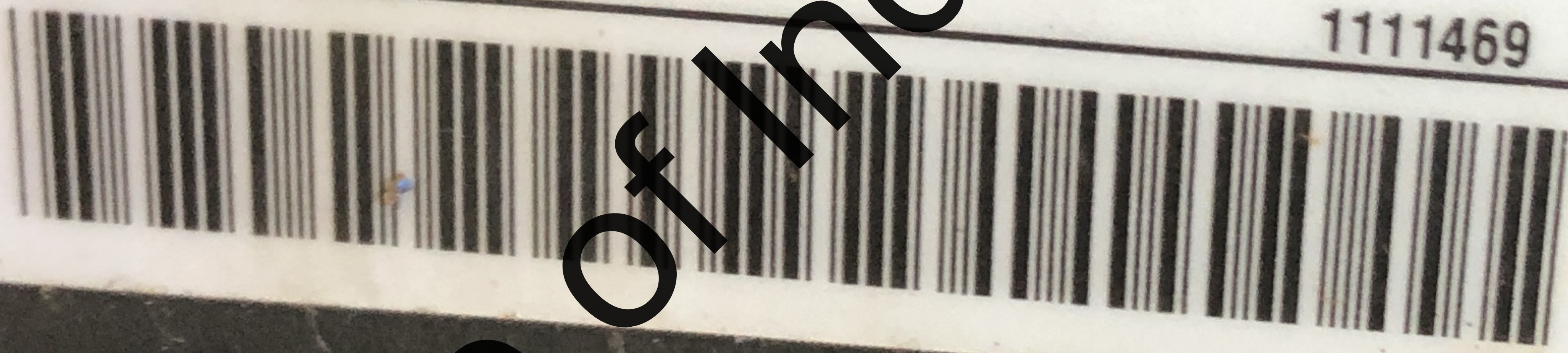
750 - R45TT

SERIAL NUMBER

750 - 18 - R066539

REFER TO BASIC TRUCK PLATE FOR CAPACITY RATINGS
INCLUDE MODEL AND SERIAL NUMBER IN ALL CORRESPONDENCE
THE RAYMOND CORPORATION, GREENE, N.Y.

1111469



Office of Industrial Relations
Disclosure Log

QB
04352

Disclosure Log

Office of Industrial Relations



DEFECTIVE
VEHICLE
REPORT

Please fill out
top and of back
with front
and driver and
other.

SAFETY TAGS

WORKSHOP
TOYOTA
TECHNICIANS
ONLY

Disclosure Log
Office of Industrial Relations

STORAGE

FR

Disclosure Log
Office of Industrial Relations

Disclosure Log
Office of Industrial Relations

RAYMOND

MODEL

750 - R45TT

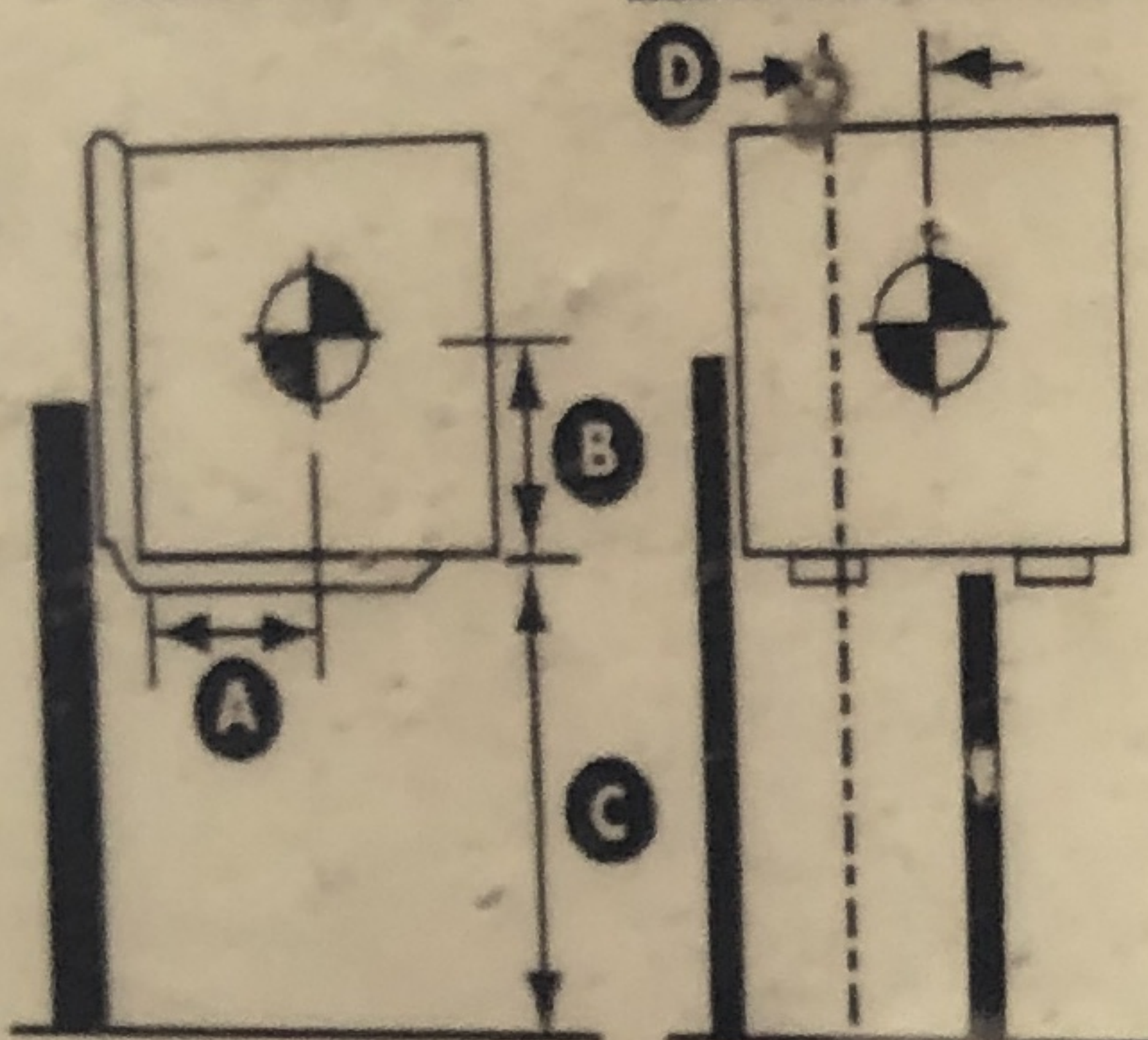
TRUCK WEIGHT +/- 5%

With Maximum Battery

4382 kg

Without Battery

3066 kg



CENTER ALL LOADS ON MAST CENTERLINE WITH FORKS

Horizontal Load Center

A 600 mm

Vertical Load Center

B 600 mm

Load Center Side to Side

D Up to 100 mm

SPEED REDUCTIONS AUTOMATICALLY IMPOSED FOR ELEVATED HEIGHTS ABOVE

Maximum Lift Height

3099 mm

8153 mm

MANUFACTURED TO COMPLY WITH THE MANDATORY REQUIREMENTS OF AS 2359 EXCEPT ON THE DATE OF MANUFACTURE. TOYOTA MATERIAL HANDLING AUSTRALIA PTY LTD 8 SECOMBE PLACE MOOREBANK, NSW 2170

Raymond Corporation
P.O. Box 130
Greene, New York 13778

SERIAL NO.

750 - 18 - BC66539

VOLTS

36

BATTERY WIDTH

536 mm

BATTERY WEIGHT

Maximum

1315 kg

Minimum

1179 kg

Battery Max. Rated Capacity
Amp Hours

1240

At 6 Hour Rate

HORIZONTAL MOTION OF BATTERY
NOT TO EXCEED 0.5 INCHES (12.7 mm)

ATTACH RESTRAINT TO BATTERY
COMPARTMENT AS REQUIRED.

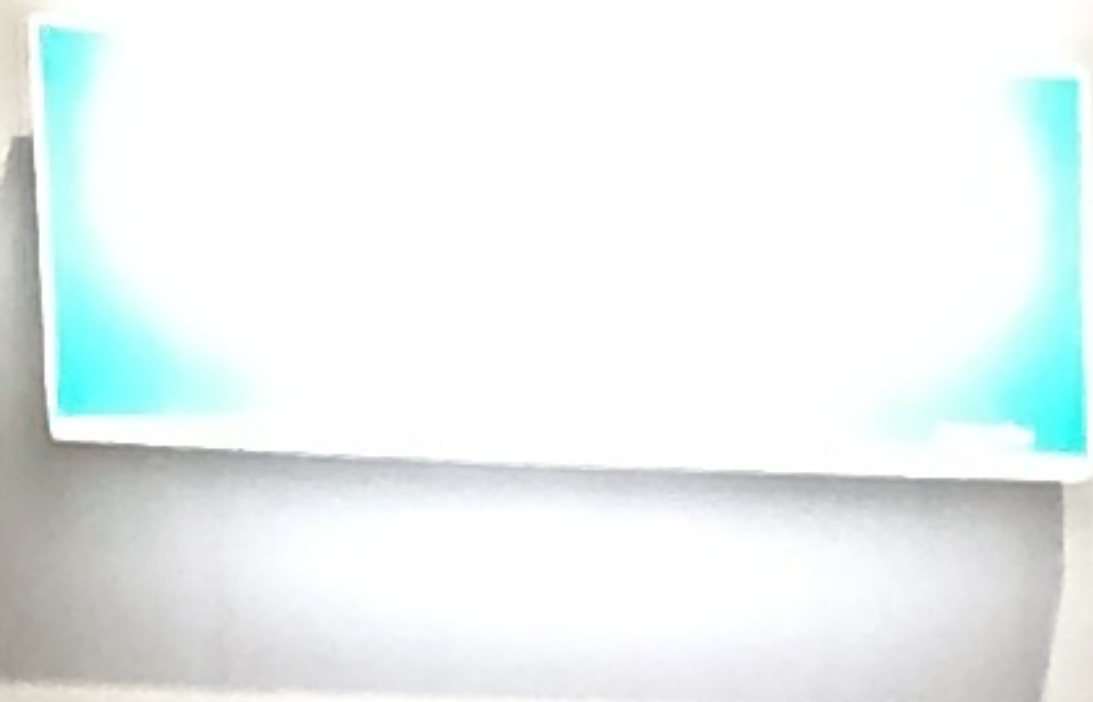
CAPACITY

MAX. CAPACITY kg	Dim. C mm
2041	6604
1814	7223
1588	7843
1361	8464
1240	8153
-	-

3099 mm

8153 mm

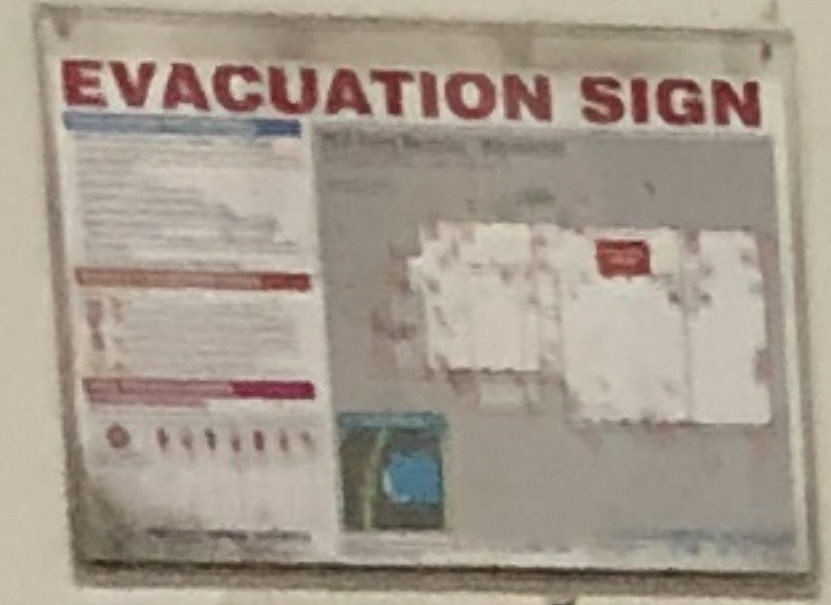
1140227



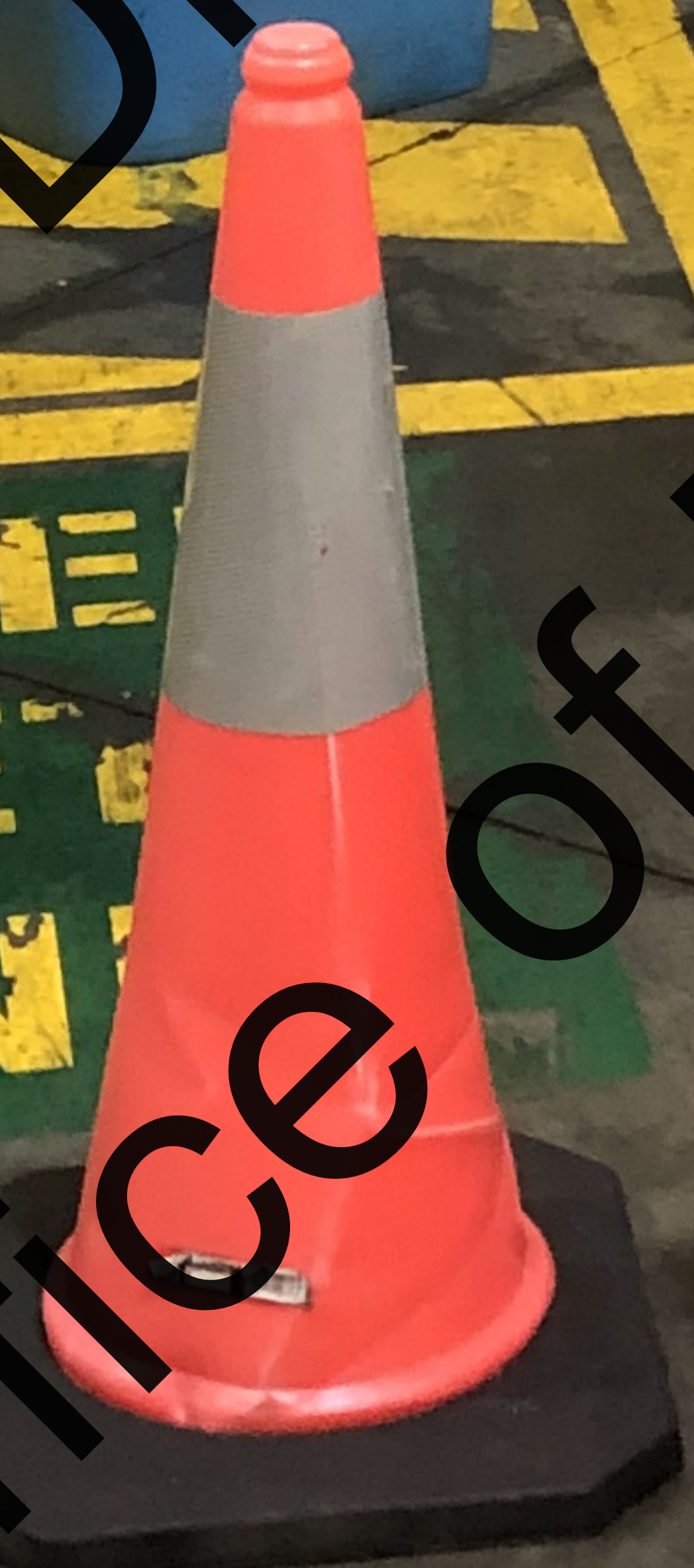
FIRE SAFETY DOOR
DO NOT OBSTRUCT

NO EXIT
Door Alarmed

✓ Push bar to open



DRIVE
SAFE
ZONE



Office of Industrial Relations
Disclosure Log

Disclosure Log
Office of Industrial Relations

Office of Industrial Relations
Disclosure Log



Office of Industrial Relations
Disclosure Log

TWEED/GOLD COAST

HCF

RBF FOOD COURT

2 LOUR

MILL

ACT

RBH FOOD COURT

LOVA

Disclosure Log
Office of Industrial Relations

ASAFE
ASAFE AUSTRALASIA
PUSH
TEL: (011) 9231 8977
www.asafe.com

Office of Industrial Relations
Disclosure Log

Disclosure Log
Office of Industrial Relations