



DANGER
CONSTRUCTION
SITE
DO NOT ENTER

deluca

**Development
& Construction**

WE
inspire
PEOPLE TO
MAKE IT

happen



deluca Development
& Construction



Insurance Log

Development
& Construction

WE
inspire
PEOPLE TO
MAKE IT
HAPPEN

elka
inspire
PEOPLE TO
MAKE IT
HAPPEN

a



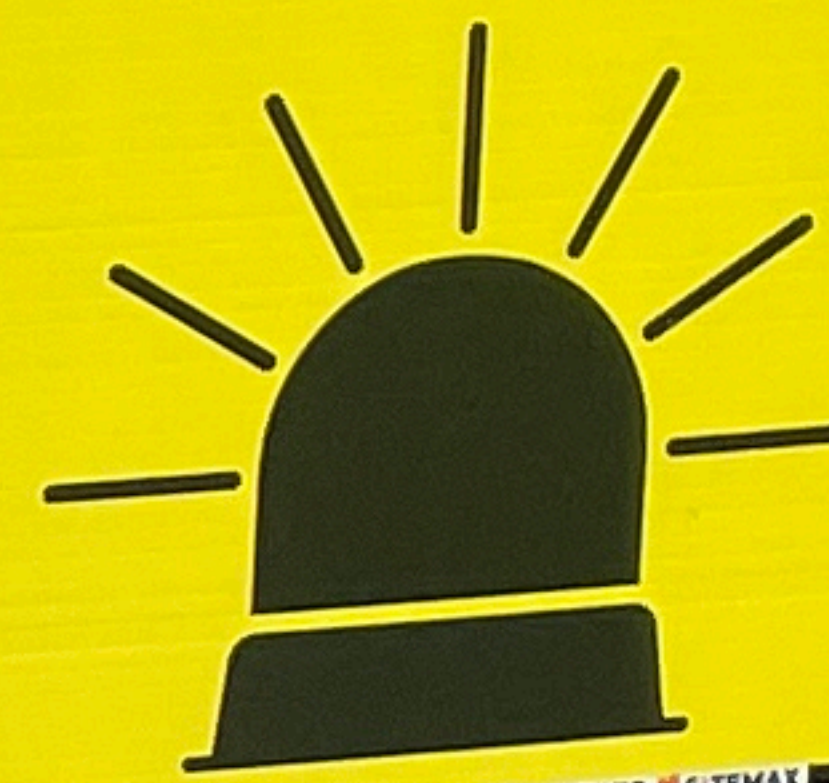
coles

DR Disclosure Log





**TURN ON
FLASHING LIGHT
WHEN ENTERING
SITE**



NOTICE

**ALL VISITORS
MUST REPORT
TO SITE OFFICE**

DANGER

**CONSTRUCTION
SITE
UNAUTHORISED PERSONS
KEEP OUT**



**THIS PROTECTIVE EQUIPMENT
MUST BE WORN
ON THIS SITE**

NOTICE

**SUBCONTRACTORS
MUST BE INDUCTED
PRIOR COMMENCING
WORK ON SITE**

deluca

**CONSTRUCTION
SITE
DO NOT ENTER**









ATCO

1800 70 70 77

www.atco.com.au

Putzmeister M 36-4

36

TECO



OIR Disclosure Log

Putzmeister M 36-4

36

XCMG

GEORGE BROTHERS RIGGING

ATCO

18 10 70 77

ATCO

226 09

atco



© P. Disclosure Log

ATCO

18 70 70 77

88 88 88 88 88



RIGHT



NOTICE
ALL VISITORS
MUST REPORT
TO SITE OFFICE

NOTICE
SUBCONTRACTORS
MUST REPORT
PROJECT NUMBER
AND DATE

ACCESS ONLY



deluca
CONSTRUCTION
DANGER
CONSTRUCTION SITE
ALL SAFETY RULES
MUST BE FOLLOWED

EMERGENCY
ASSEMBLY
POINT

CAUTION
PEDESTRIAN
CROSSING

deluca

deluca Development
& Construction

inspire
PEOPLE TO
MAKE
happy

2214742

808 WMV

NOTICE

**ALL VISITORS
MUST REPORT
TO SITE OFFICE**

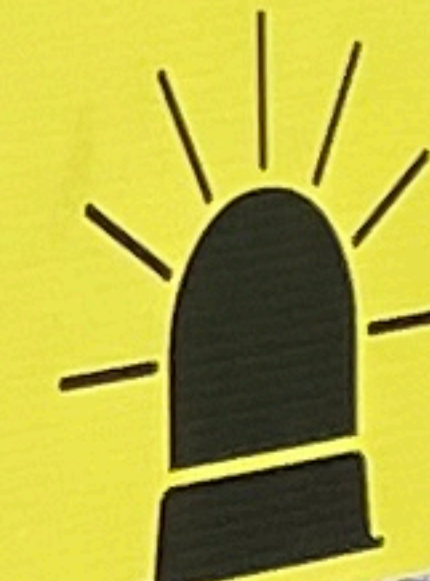
deluca

ENVIR_oSIGN

© I AM RECYCLABLE. PLEASE SEND ME BACK TO SITEMAX



**TURN ON
FLASHING LIGHT
WHEN ENTERING
SITE**



ENVIR_oSIGN

© I AM RECYCLABLE. PLEASE SEND ME BACK TO SITEMAX

NOTICE

**SUBCONTRACTORS
MUST BE INDUCTED
PRIOR COMMENCING
WORK ON SITE**

deluca

ENVIR_oSIGN

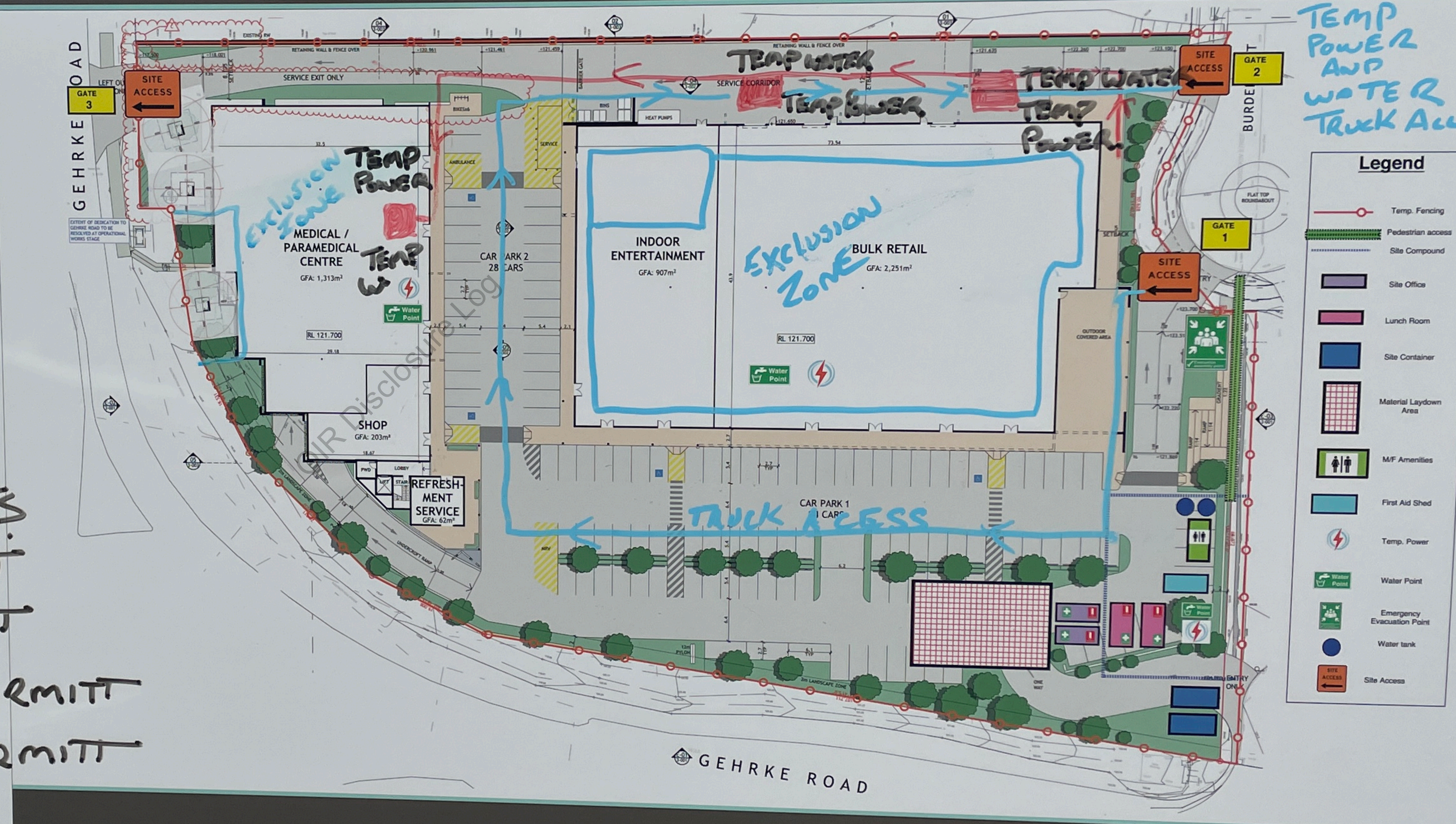
© I AM RECYCLABLE. PLEASE SEND ME BACK TO SITEMAX

EXCLUSION ZONE

PERMITTS
 CUT & CORE PERMITTS
 EXCAVATION PERMITT
 HOT WORKS PERMITT
 WORK AT HEIGHTS PERMITT
 CONFINED SPACE PERMITT
 ISOLATION PERMITTS

Site Layout Plan
 Plainland Home + Life

deluca



TEMP POWER AND WATER TRUCK ACCESS

deluca

Serve to Influence and Inspire

KIT

Site Layout Plan Plainland Home + Life

deluca

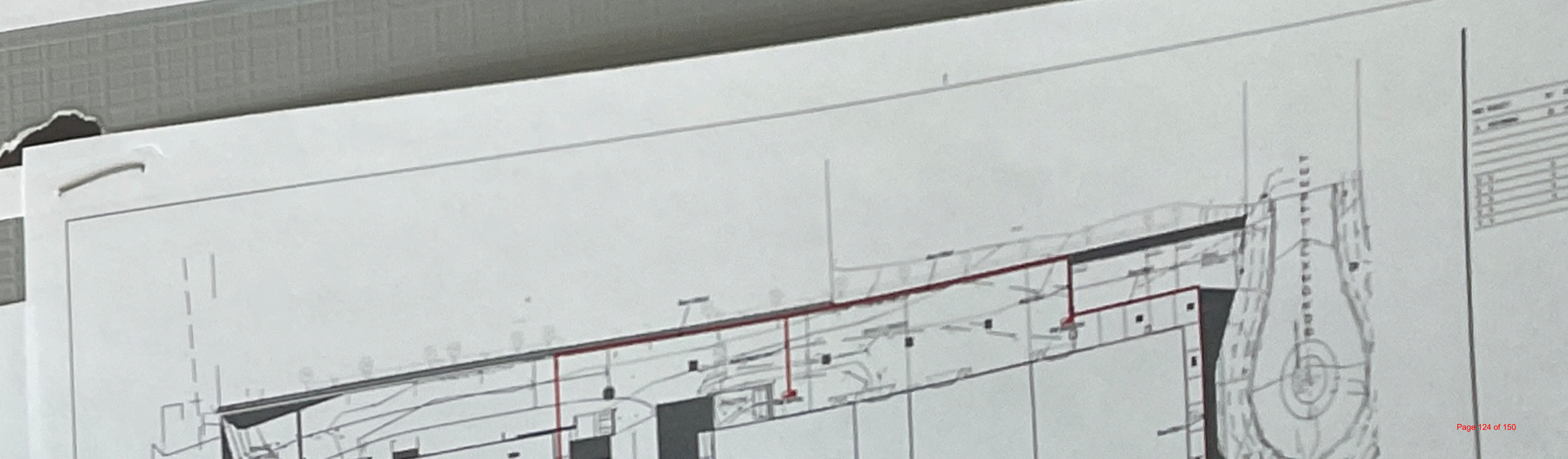


Legend

- Temp. Fencing
- Perimeter Access
- Site Component
- Site Office
- Lunch Room
- Site Container
- Minimal Lighted Area
- W/P Assembly
- Fire Air Shed
- Temp. Power
- Water Point
- Emergency Escalation Point
- Water Tank
- Site Access

EXTENT OF INDICATION TO GEHRKE ROAD TO BE RESOLVED AT OPERATIONAL WORKS STAGE

GEHRKE ROAD









snorkel 6605J



neXtrack+

deluca

CAPABILITY STATEMENT

Where health hazards pose a significant risk, De Luca Corporation subcontracting partners are required to have a program in place to monitor and manage dust, noise and other hazardous exposures.

As part of De Luca Corporation continued efforts to improve health, safety and wellbeing standards, we have reviewed the capability and offerings of neXtrack for their exposure monitoring services, across our projects.

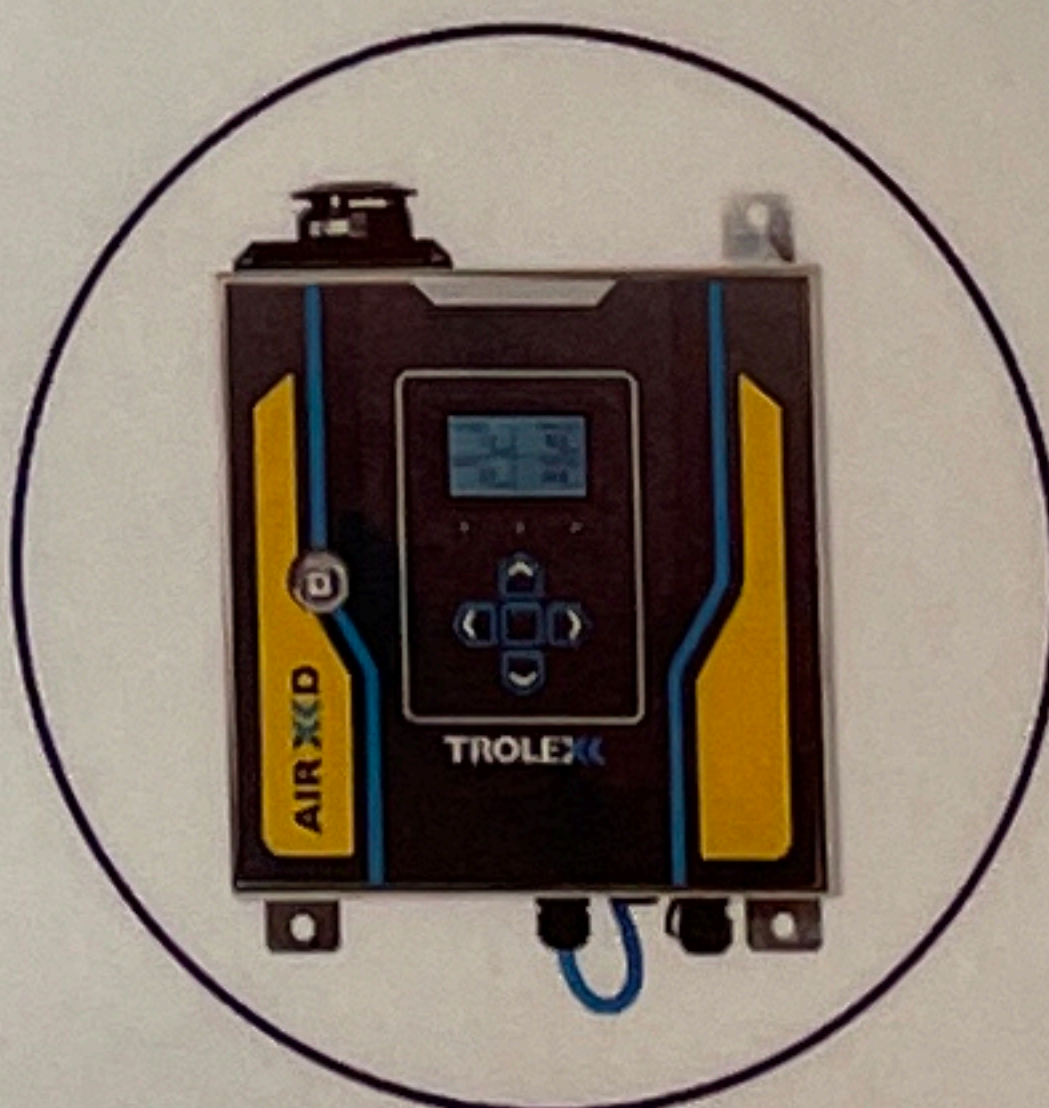
WHO IS NEXTRACK

neXtrack are an industrial hygiene company providing real time monitors and a suite of connected controls to minimise occupational lung disease in construction, such as silica dust and mould.

They will assist project teams to understand the requirements for silica management and to provide control and monitoring services.

THEY PROVIDE

- IoT connected controls
- Real time monitors
- Fit testing services
- Hygiene services
 - Silica
 - Mould
- Document support and templates
- Health monitoring
- Control validation
- Air Monitoring



MONITORS



CONTROLS



PLATFORM