















CUSTOMER
PARKING →





WARNING!
Ensure the PULLEY COVER is closed & the BOLT fully tightened prior to use. The unit WILL NOT OPERATE otherwise.

FOR YOUR SAFETY
Know your tool! Read and understand the operation manual before use. Use recommended drill speed; see chart inside pulley cover.
• Always wear safety goggles that comply to AS/NZS 1337.1.
• Do not wear gloves, necktie or loose clothing, tie back long hair.
• Securely clamp work to table if it is too short to contact the column support when in operating position.
• Securely lock the column support to the base, table support to the column & lock head to column prior to operation.
• Use only recommended accessories.

WARNING!
Adjust BELT TENSION before use; refer to the SPEED ADJUSTMENT instructions in the operating manual. Incorrect tensioning will cause the drill to VIBRATE during use.

ozito BDP-500
9 Speed Drill Press
Input: 230-240V ~50Hz Power: 500W (62.15min)
0-500-2,500/min (9 Speeds) Chuck Size: Ø16mm
IPX0
Date / DN: 2021/04/OZI-20-8868-AU
I-NO: 11029

OZITO

BDP-500

9 Speed Drill Press

Input: 230-240V ~50Hz

Power: 500W (S2 15min)

n₀: 500-2,500/min (9 Speeds)

Chuck Size: Ø16mm

IPX0

Date / O/N:

EH-Art.-No.: 30.001.36

I-No.: 11029

2021/04/OZI-20-8868-AU

Ozito Industries Pty Ltd
1-23 Letcon Drive, Bangholme, Vic, 3175



Made in China

Art.-Nr.: 30.001.36
I.-Nr.: 11029



See-Mit:
4GACW05

Insp. No. 000371

Plant No. H32235V
Licence No. 0901
Test Date 21/12/15
Next Test Due 21/12/16







ager

Header NT 340
main switch
light power

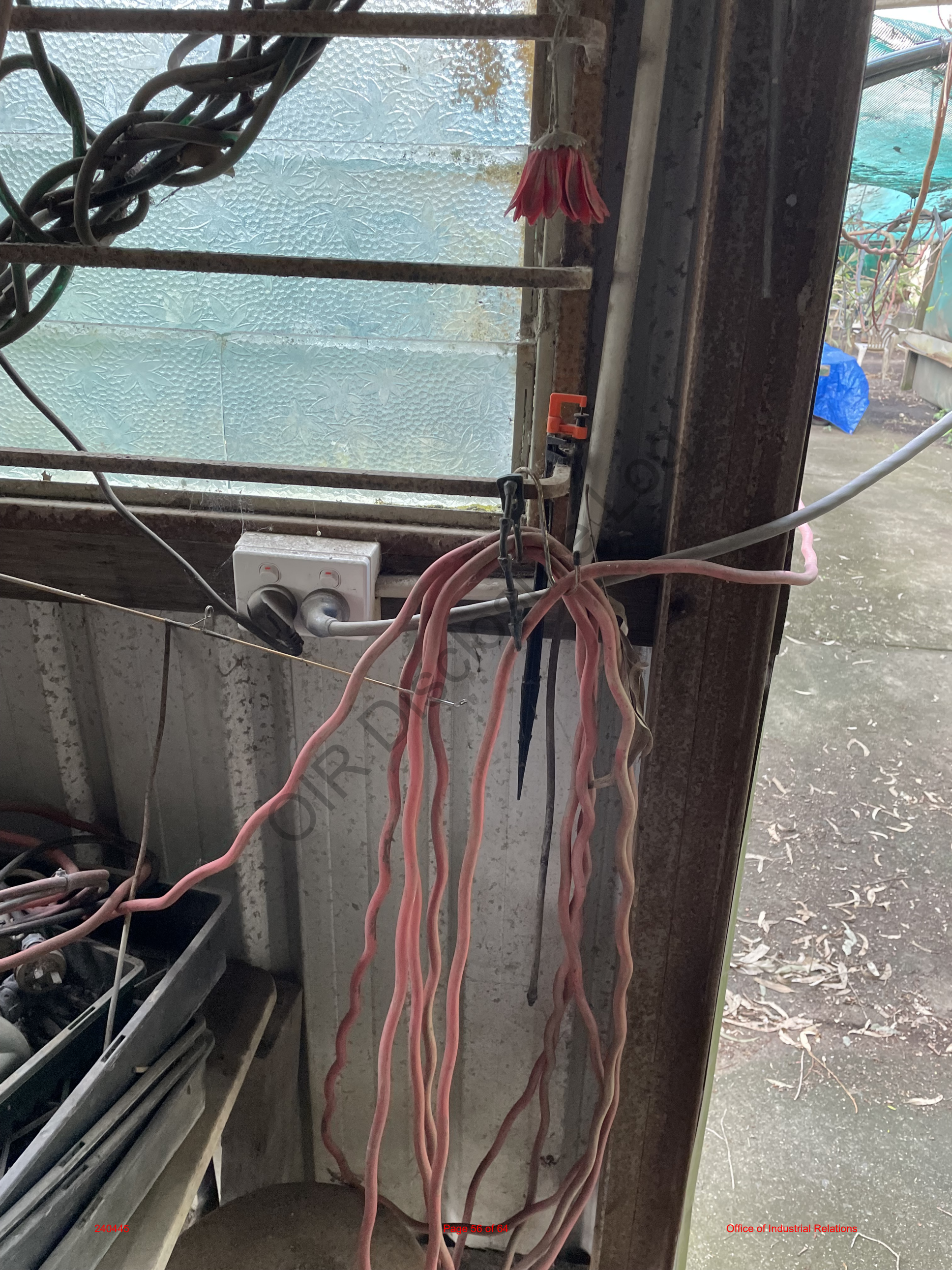
multi9 D60 C16
multi9 C60a
multi9 D60 C10
wico RCD240/30
PRESS TO TEST MONTHLY
RCD 16 AS3110
NOMIN. MODE

20A 3P outlet

power power light
safety switch protects circuits
HOT BEDS

WARNING
DUAL SUPPLY
ISOLATE BOTH NORMAL AND SOLAR
SUPPLIES BEFORE WORKING ON
THIS SWITCHBOARD











SFW-EURODRIVE
 Sydney / Australia
 DN100LS4FG
 20.7863754201.0001.20 Inverter duty VPM 3-IEC60034
 V230/400 Δ/Y
 Hz 50 rpm1450
 kW 2.2 S1
 Cos φ 0.76
 Th. Cl. 155(F)
 η100% η75% η50%
 86.9% 87.5% 86.4%
 FP FG130 D160 WE 16
 IM M1
 kg 27.000
 188 684 3 EN

Year 2020

IP 55

IE3

CE





| | | | |
|--------------------------|-----------------------|------------------|---------|
| CE | | | |
| MODEL | UWL 220 | OPERATING WEIGHT | 5500 kg |
| SERIAL NO. | 221551 | RATED LOAD | 2200 kg |
| ENGINE MODEL | MMINS 4BT3.9-C100 | ENGINE POWER | 75 kW |
| SN OF FRAME(F R) | 221551 | | |
| DIMENSIONS (L X W X H) | 5500 x 2045 x 2780 mm | | |
| MANUFACTURING DATE | 07 2022 | | |



OIR Disclosure Log



